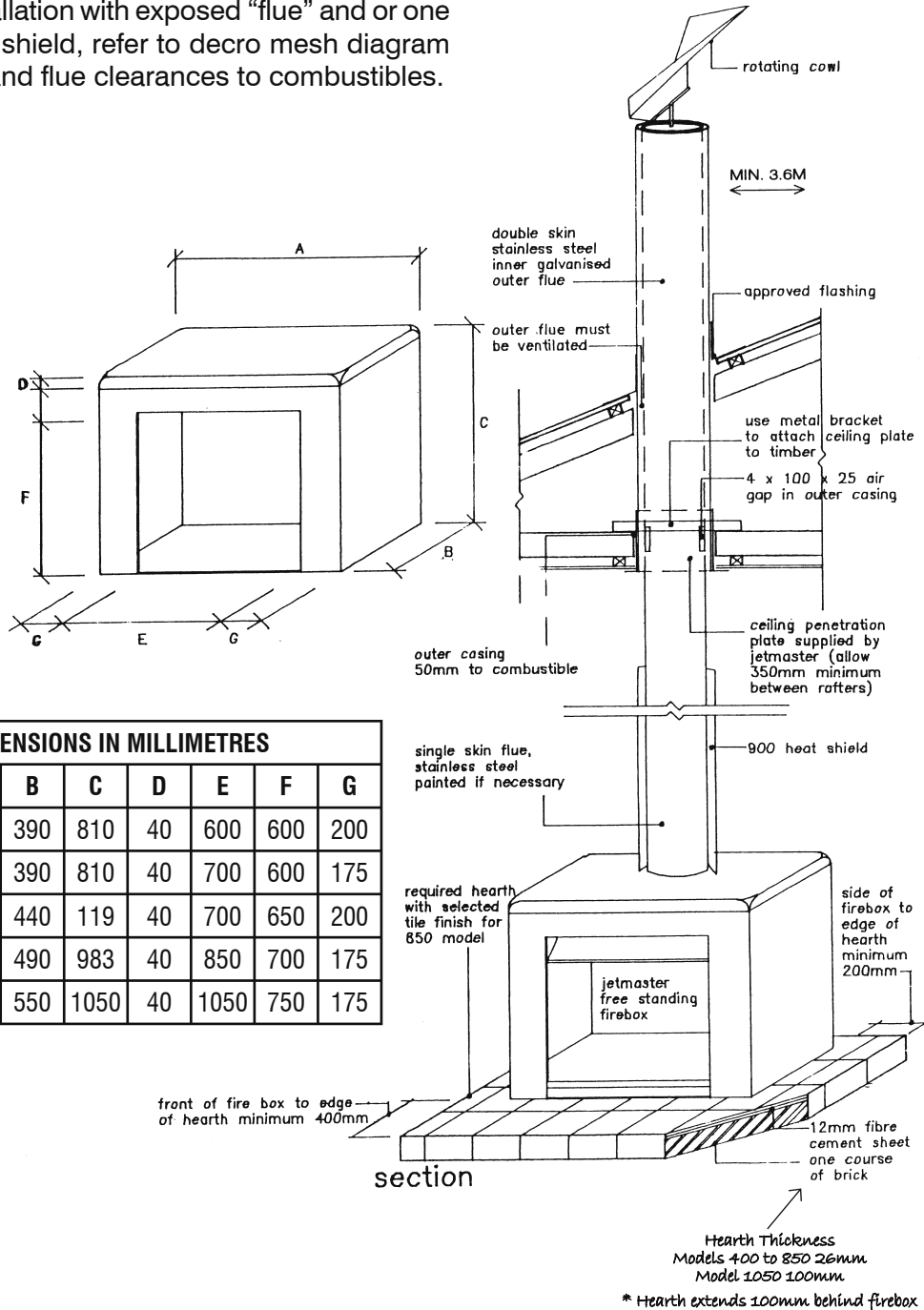


# JETMASTER FREE STANDING METAL CASING "A"

Typical installation with exposed "flue" and or one length heat shield, refer to decro mesh diagram for firebox and flue clearances to combustibles.



DIMENSIONS IN MILLIMETRES							
MODEL	A	B	C	D	E	F	G
600	1000	390	810	40	600	600	200
700S	1050	390	810	40	700	600	175
700D	1100	440	119	40	700	650	200
850	1200	490	983	40	850	700	175
1050	1400	550	1050	40	1050	750	175

front of fire box to edge of hearth minimum 400mm

section

Hearth Thickness  
Models 400 to 850 26mm  
Model 1050 100mm  
\*Hearth extends 100mm behind firebox

# JETMASTER FREE STANDING METAL CASING "B"

**Typical installation with deco mesh heat shield to ceiling.**

<b>FIREBOX AND FLUE CLEARANCES TO COMBUSTIBLES</b>			
<b>Jetmaster 600, 700S, 700D &amp; 850 Freestanding</b>			
	A	B	C
Flue Pipe	250	175	50
Flue Pipe with 900 Heat Shield	100	175	50
Flue Pipe with Decro Mesh	100	175	50

NOTE: min. 400mm from front of firebox to edge of hearth

